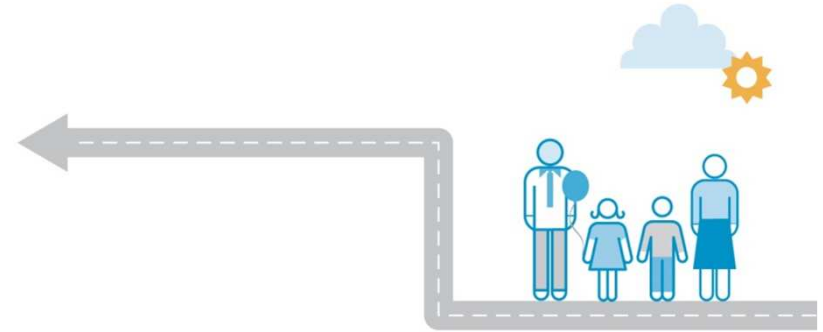




High Impact Change Model

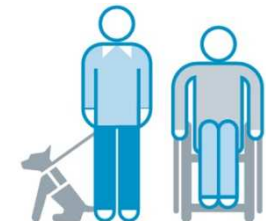


Developed in partnership – NHS and Local Government

8 changes:

- Early discharge planning
- system change (incl. voluntary sector)
- multi- disciplinary teams
- trusted assessors
- discharge to assess
- 7 day working
- improved choice
- improved health in care homes

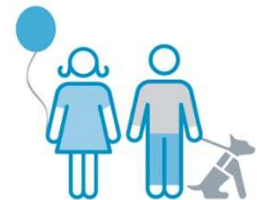
Self assessment nationally





What is already in place?

- Re-ablement service with “Good” CQC rating
- Good relationships with hospitals, GP practice, housing and other agencies
- Low delays attributed to social care
- Responsive adult social care team
- Single provider in place
- New hospital to home model





Hospital to Home (H2H)

STAFF :Two full time Reablement Coordinators (cover 7 am -7pm weekdays) backed up by commissioned domiciliary care agency (Blue Bird Care) who take on all hospital discharge referrals

Reablement service is led by Senior Occupational Therapist.

Care navigator role - liaison with wards and G.Ps.

Reablement Service offers:

Telecare /Assistive technology assessments including Fire Safety Risk assessment.

Take Home and Settle Service. This is to be taken on whilst person is an inpatient where level of complexity warrants (to be decided by Senior practitioner)

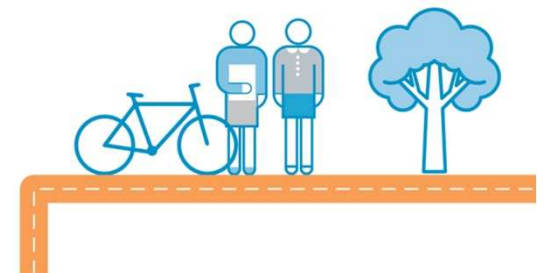
Baseline assessment with person and their family ready for transition to Social Work allocation.

Urgent Duty Home Visits as requested by Duty Senior Practitioner.

Full Reablement service in conjunction with OT.

Reablement plus – out of hours hospital avoidance – up to 72 hours support from Explora

Haven – can be 24 hours a day and include adaptations and equipment



Duration:

Work continues for up to 6 weeks and is not chargeable to the service user. At week 4 any case that requires ongoing support is allocated to a social worker and assessment is completed prior to end of Reablement service (ideally conducted jointly with a Reablement Coordinator). Financial assessment is commenced at 4 week stage for anyone assessed as needing an Individual Budget.

Weekly meetings take place between Duty Senior Practitioner OT Reablement coordinator and Bluebird Care to ensure support plans are being followed effectively and outcomes measured.

